

Create

Create nurturing spaces for students.



Integrate

Integrate SEL skill building into academics.



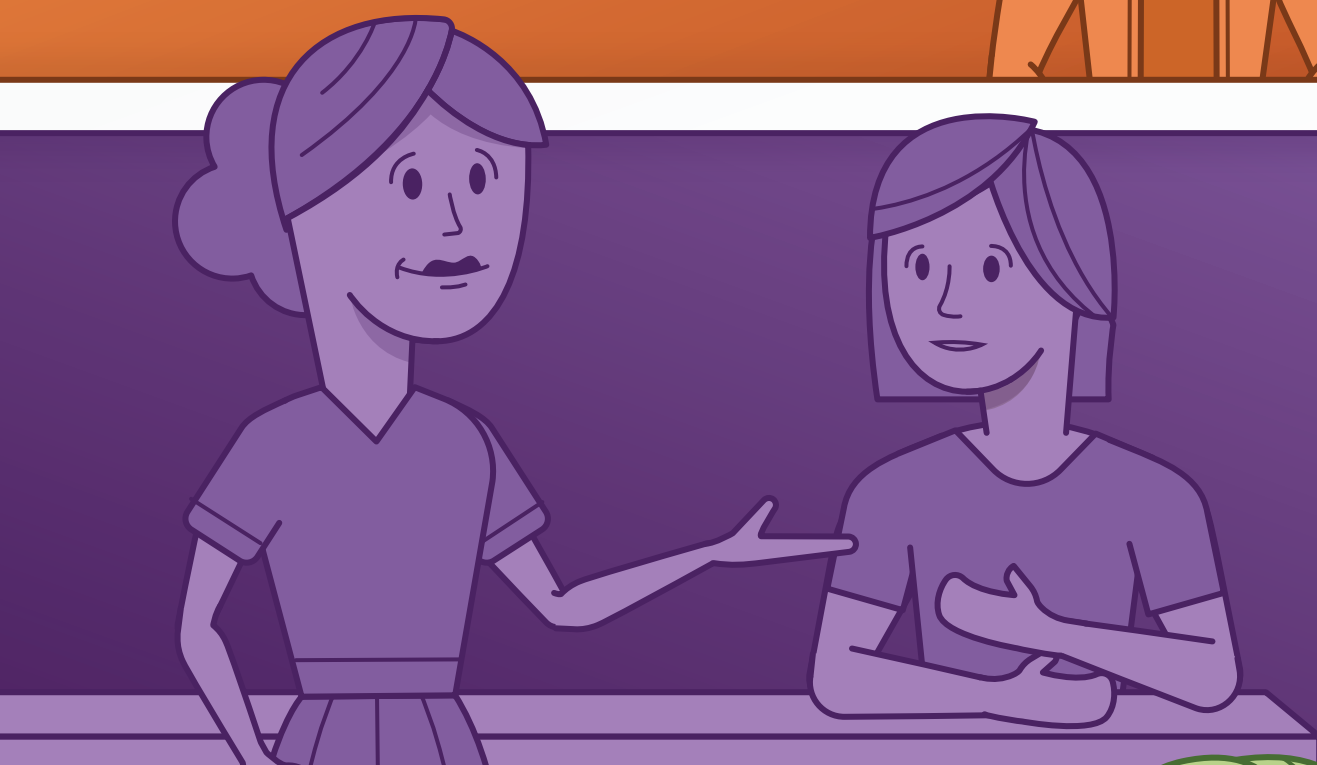
Instruct

Instruct SEL skills explicitly.



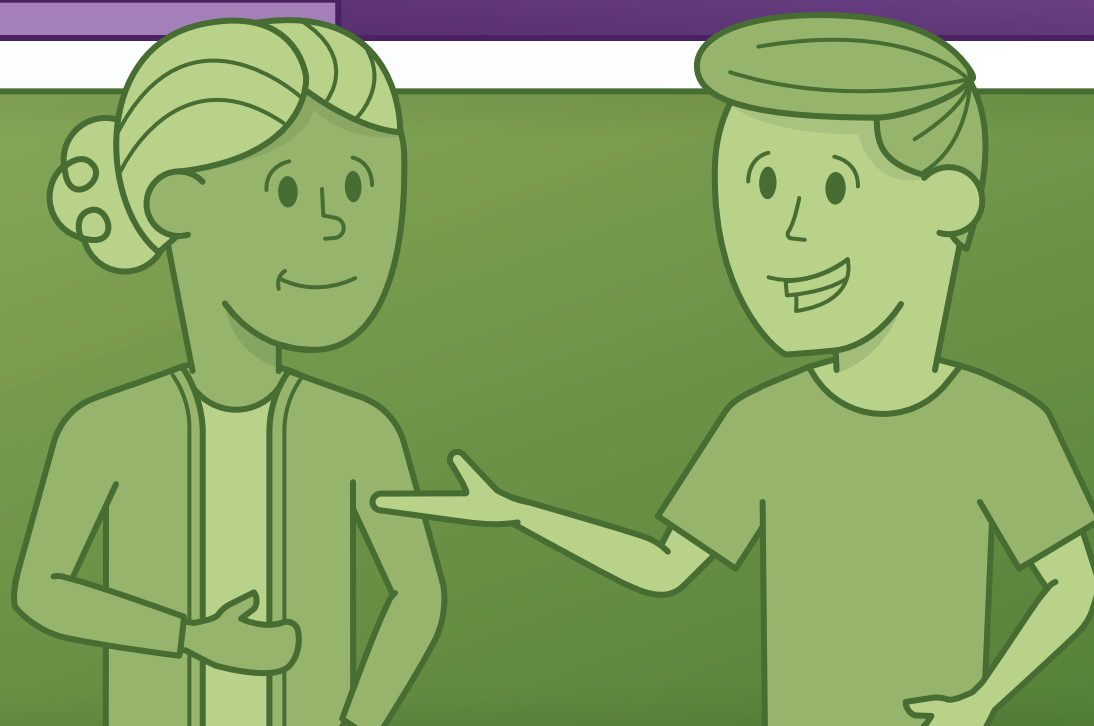
Reflect

Reflect on cultural aspects of SEL.



Respect

Respect one's self and others.



Communicate

Communicate about SEL with all stakeholders.



Empower

Empower students to take charge of their own SEL.

